

TYPE C GONIOPHOTOMETER DISTRIBUTION TESTING

REPORT NO. 105439735CRT-001

Test Configuration	Tested Model No.	Pass/Fail/NA
4	S3-SS-1-N/A-NR-SY-2-1-3L-1-6	NA

PHOTOMETRIC AND ELECTRICAL MEASUREMENTS

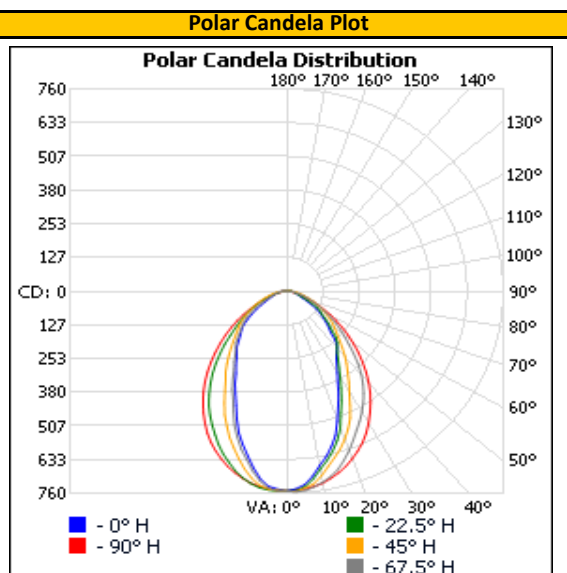
Base Orientation	Input Voltage (Vac)	Input Current (mA)	Input Power (W)	Input Power Factor ()
Up	12.00	229.5	26.60	0.966

Light Output (lm)	Efficacy (lm/W)
1309.1	49.2

LUMINOUS INTENSITY SUMMARY (candela)

Vertical Angle (°)	Horizontal				
	0	22.5	45	67.5	90
0	752	752	752	752	752
5	729	737	743	751	746
10	666	679	704	729	732
15	605	622	648	693	706
20	518	548	593	639	671
25	429	455	527	579	629
30	354	374	439	527	573
35	302	315	373	470	512
40	275	274	317	407	447
45	218	243	263	332	376
50	179	193	221	264	305
55	144	151	186	209	238
60	101	122	151	158	174
65	64	80	119	115	119
70	47	54	87	80	76
75	37	39	61	51	45
80	29	29	43	30	23
85	22	21	27	16	8
90	15	15	15	7	0
95	9	9	7	1	1
100	5	4	1	0	1
105	1	0	0	0	0
110	0	0	0	0	0
115	0	0	0	0	0
120	0	0	0	0	0
125	0	0	0	0	0
130	0	0	0	0	0
135	0	0	0	0	0
140	0	0	0	0	0
145	0	0	0	0	0
150	0	0	0	0	0
155	0	0	0	0	0
160	0	0	0	0	0
165	0	0	0	0	0
170	0	0	0	0	0
175	0	0	0	0	0
180	0	0	0	0	0

Full luminous intensity matrix found in .IES file



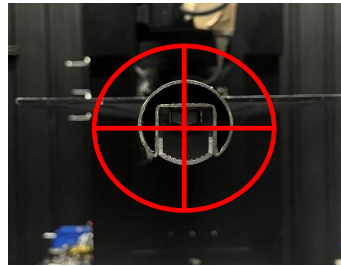
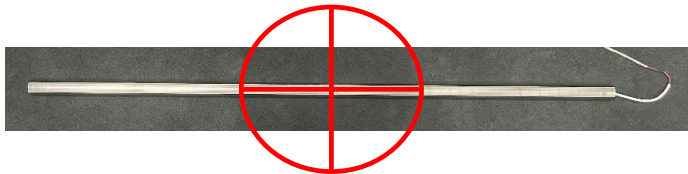
REPORT NO. 105439735CRT-001

ORIENTATION AND ALIGNMENT OF DUT

Luminous Opening		
Length (ft)	Width (ft)	Height (ft)
0.08	6.00	0.09
0°-180° H	90°-270° H	0°-180° V

Test Distance (ft)
29.2

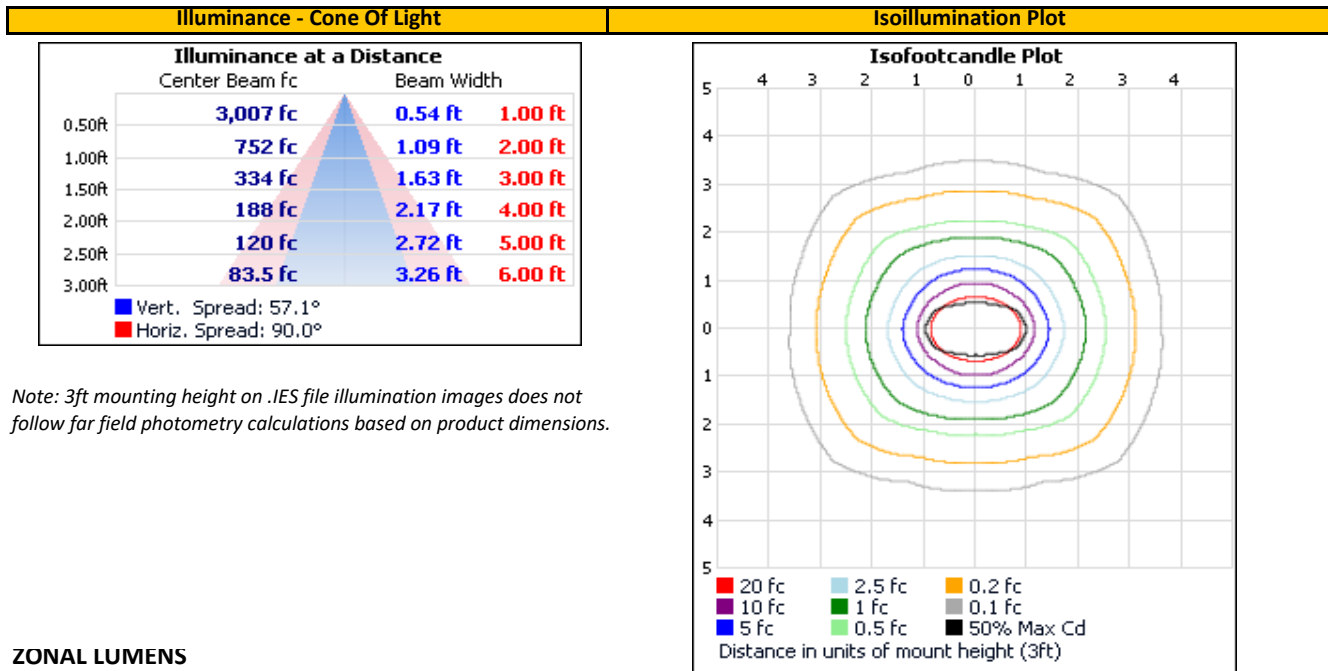
PHOTOMETRIC CENTER OF DUT



SAMPLE PHOTOS



ILLUMINANCE SUMMARY



Note: 3ft mounting height on .IES file illumination images does not follow far field photometry calculations based on product dimensions.

ZONAL LUMENS

Zonal Lumen Summary					
Zone (°)	Lumens	Luminaire			
0-30	492.2	37.6%			
0-40	738.3	56.4%			
0-60	1,124.7	85.9%			
60-90	178.0	13.6%			
70-100	81.2	6.2%			
90-120	6.5	0.5%			
0-90	1,302.6	99.5%			
90-180	6.5	0.5%			
0-180	1,309.1	100.0%			
Zone (°)	Lumens	Total	Zone (°)	Lumens	Total
0-10	69.7	5.3%	90-100	6.0	0.5%
10-20	183.1	14.0%	100-110	0.4	0.0%
20-30	239.4	18.3%	110-120	0.0	0.0%
30-40	246.1	18.8%	120-130	0.0	0.0%
40-50	219.4	16.8%	130-140	0.0	0.0%
50-60	167.0	12.8%	140-150	0.0	0.0%
60-70	102.8	7.9%	150-160	0.0	0.0%
70-80	52.7	4.0%	160-170	0.0	0.0%
80-90	22.6	1.7%	170-180	0.0	0.0%