

## TYPE C GONIOPHOTOMETER DISTRIBUTION TESTING

REPORT NO. 105439735CRT-001

Test Configuration	Tested Model No.	Pass/Fail/NA
3	S3-SS-1-N/A-NR-AS-2-3-3L-1-6	NA

## PHOTOMETRIC AND ELECTRICAL MEASUREMENTS

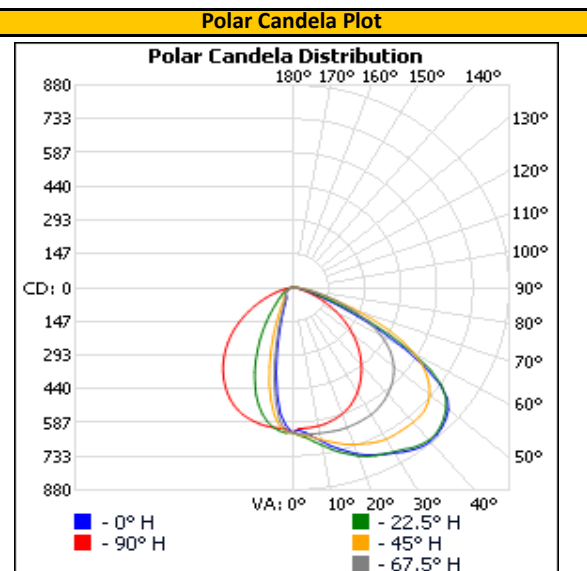
Base Orientation	Input Voltage (Vac)	Input Current (mA)	Input Power (W)	Input Power Factor ( )
Up	120.00	241.3	28.06	0.969

Light Output (lm)	Efficacy (lm/W)
1567.8	55.9

## LUMINOUS INTENSITY SUMMARY (candela)

Vertical Angle (°)	Horizontal				
	0	22.5	45	67.5	90
0	629	629	629	629	629
5	633	655	646	640	613
10	676	694	671	642	611
15	724	740	699	646	601
20	769	778	725	647	586
25	801	805	746	644	562
30	830	824	760	638	527
35	859	849	762	624	484
40	872	864	763	603	436
45	858	851	757	575	383
50	826	814	726	538	326
55	731	739	667	486	264
60	517	564	571	416	202
65	292	340	427	327	142
70	144	174	260	232	91
75	79	92	139	144	52
80	48	54	74	79	27
85	30	33	41	39	10
90	19	20	22	16	2
95	11	10	10	4	3
100	4	4	2	1	3
105	0	0	0	1	3
110	0	0	0	1	2
115	0	0	0	0	2
120	0	0	0	0	1
125	0	0	0	0	1
130	0	0	0	0	1
135	0	0	0	0	0
140	0	0	0	0	0
145	0	0	0	0	0
150	0	0	0	0	0
155	0	0	0	0	0
160	0	0	0	0	0
165	0	0	0	0	0
170	0	0	0	0	0
175	0	0	0	0	0
180	0	0	0	0	0

Full luminous intensity matrix found in .IES file



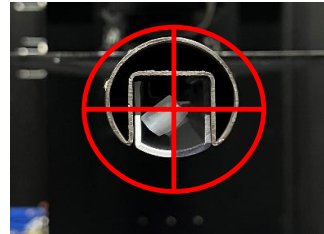
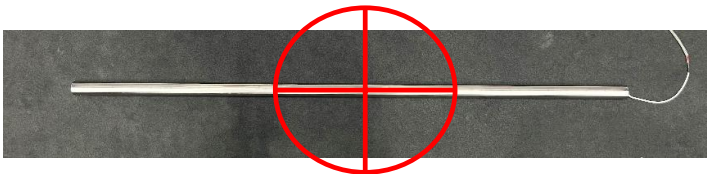
**REPORT NO. 105439735CRT-001**

**ORIENTATION AND ALIGNMENT OF DUT**

Luminous Opening		
Length (ft)	Width (ft)	Height (ft)
0.04	6.00	0.09
0°-180° H	90°-270° H	0°-180° V

Test Distance (ft)
29.2

**PHOTOMETRIC CENTER OF DUT**



**SAMPLE PHOTOS**

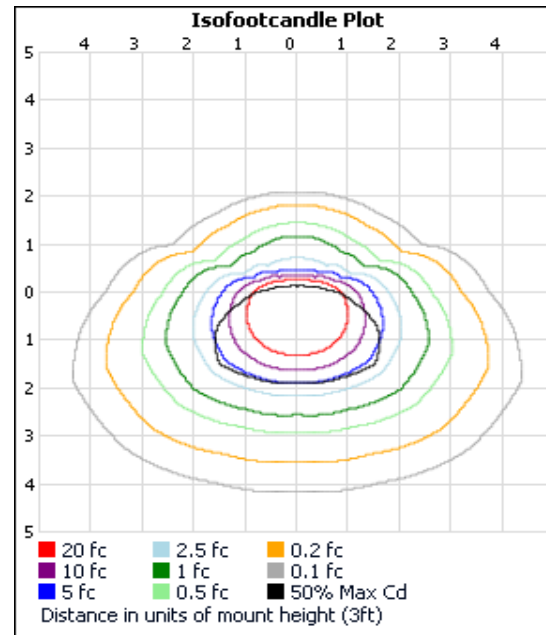


## ILLUMINANCE SUMMARY

### ILLUMINANCE - Cone Of Light      Isoillumination Plot

	Illuminance at a Distance	
	Center Beam fc	Beam Width
0.50ft	2,517 fc	0.70 ft 1.22 ft
1.00ft	629 fc	1.40 ft 2.43 ft
1.50ft	280 fc	2.11 ft 3.65 ft
2.00ft	157 fc	2.81 ft 4.87 ft
2.50ft	101 fc	3.51 ft 6.09 ft
3.00ft	69.9 fc	4.21 ft 7.30 ft

■ Vert. Spread: 70.1°  
■ Horiz. Spread: 101.2°



Note: 3ft mounting height on .IES file illumination images does not follow far field photometry calculations based on product dimensions.

## ZONAL LUMENS

### Zonal Lumen Summary

Zone (°)	Lumens	Luminaire
0-30	425.1	27.1%
0-40	696.3	44.4%
0-60	1,293.1	82.5%
60-90	268.4	17.1%
70-100	93.5	6.0%
90-120	6.1	0.4%
0-90	1,561.5	99.6%
90-180	6.3	0.4%
0-180	1,567.8	100.0%

Zone (°)	Lumens	Total	Zone (°)	Lumens	Total
0-10	57.8	3.7%	90-100	5.0	0.3%
10-20	150.8	9.6%	100-110	0.7	0.0%
20-30	216.5	13.8%	110-120	0.3	0.0%
30-40	271.2	17.3%	120-130	0.1	0.0%
40-50	306.3	19.5%	130-140	0.1	0.0%
50-60	290.6	18.5%	140-150	0.0	0.0%
60-70	179.9	11.5%	150-160	0.0	0.0%
70-80	67.9	4.3%	160-170	0.0	0.0%
80-90	20.6	1.3%	170-180	0.0	0.0%