

TYPE C GONIOPHOTOMETER DISTRIBUTION TESTING

REPORT NO. 105439735CRT-001

Test Configuration	Tested Model No.	Pass/Fail/NA
2	S3-SS-1-N/A-NR-SY-1-1-3L-1-6	NA

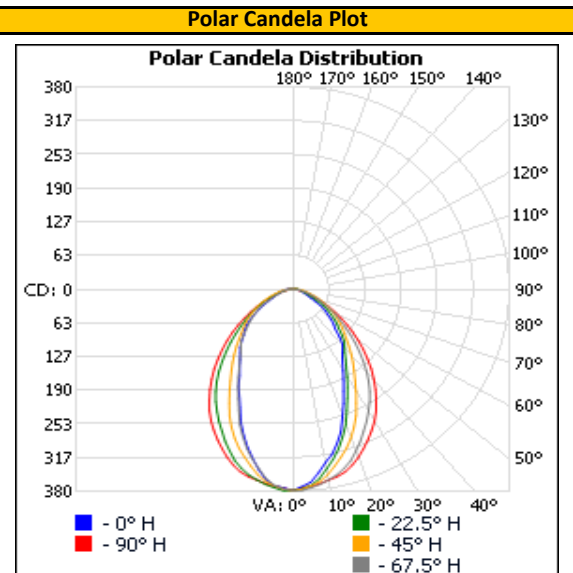
PHOTOMETRIC AND ELECTRICAL MEASUREMENTS

Base Orientation	Input Voltage (Vac)	Input Current (mA)	Input Power (W)	Input Power Factor ()
Up	120.00	130.6	14.10	0.899

Light Output (lm)	Efficacy (lm/W)
656.7	46.6

LUMINOUS INTENSITY SUMMARY (candela)

Vertical Angle (°)	Horizontal				
	0	22.5	45	67.5	90
0	379	379	379	379	379
5	364	370	371	374	372
10	331	343	354	364	364
15	300	310	327	348	355
20	255	272	298	324	336
25	211	226	262	294	312
30	176	191	222	266	287
35	151	162	188	236	255
40	136	141	159	201	221
45	105	122	134	165	186
50	87	101	113	131	150
55	69	82	96	102	116
60	46	63	77	78	85
65	30	42	60	56	58
70	22	29	44	39	36
75	17	20	31	24	21
80	13	15	21	14	11
85	10	11	13	7	4
90	7	7	7	3	0
95	4	4	3	0	0
100	2	2	0	0	0
105	0	0	0	0	0
110	0	0	0	0	0
115	0	0	0	0	0
120	0	0	0	0	0
125	0	0	0	0	0
130	0	0	0	0	0
135	0	0	0	0	0
140	0	0	0	0	0
145	0	0	0	0	0
150	0	0	0	0	0
155	0	0	0	0	0
160	0	0	0	0	0
165	0	0	0	0	0
170	0	0	0	0	0
175	0	0	0	0	0
180	0	0	0	0	0



Full luminous intensity matrix found in .IES file

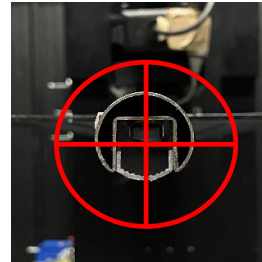
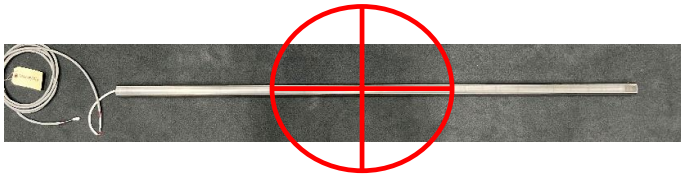
REPORT NO. 105439735CRT-001

ORIENTATION AND ALIGNMENT OF DUT

Luminous Opening		
Length (ft)	Width (ft)	Height (ft)
0.08	6.00	0.09
0°-180° H	90°-270° H	0°-180° V

Test Distance (ft)
29.2

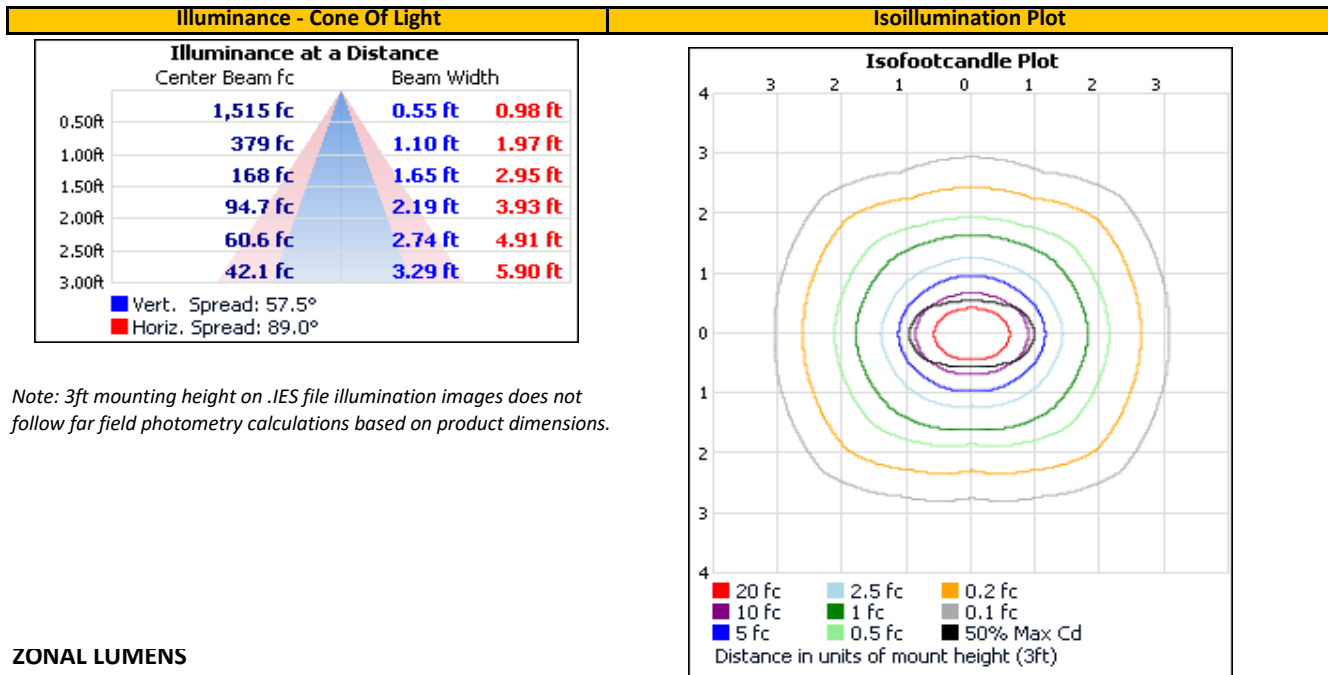
PHOTOMETRIC CENTER OF DUT



SAMPLE PHOTOS



ILLUMINANCE SUMMARY



Note: 3ft mounting height on .IES file illumination images does not follow far field photometry calculations based on product dimensions.

ZONAL LUMENS

Zonal Lumen Summary					
Zone (°)	Lumens	Luminaire	Zone (°)	Lumens	Total
0-30	247.1	37.6%	0-10	34.8	5.3%
0-40	370.9	56.5%	10-20	92.0	14.0%
0-60	565.1	86.1%	20-30	120.3	18.3%
60-90	88.5	13.5%	30-40	123.8	18.9%
70-100	40.0	6.1%	40-50	110.3	16.8%
90-120	3.0	0.5%	50-60	83.9	12.8%
0-90	653.7	99.5%	60-70	51.4	7.8%
90-180	3.0	0.5%	70-80	26.0	4.0%
0-180	656.7	100.0%	80-90	11.1	1.7%
			90-100	2.9	0.4%
			100-110	0.2	0.0%
			110-120	0.0	0.0%
			120-130	0.0	0.0%
			130-140	0.0	0.0%
			140-150	0.0	0.0%
			150-160	0.0	0.0%
			160-170	0.0	0.0%
			170-180	0.0	0.0%