

TYPE C GONIOPHOTOMETER DISTRIBUTION TESTING

REPORT NO. 105439735CRT-001

Test Configuration	Tested Model No.	Pass/Fail/NA
1	S3-SS-1-N/A-NR-AS-1-3-3L-1-6	NA

PHOTOMETRIC AND ELECTRICAL MEASUREMENTS

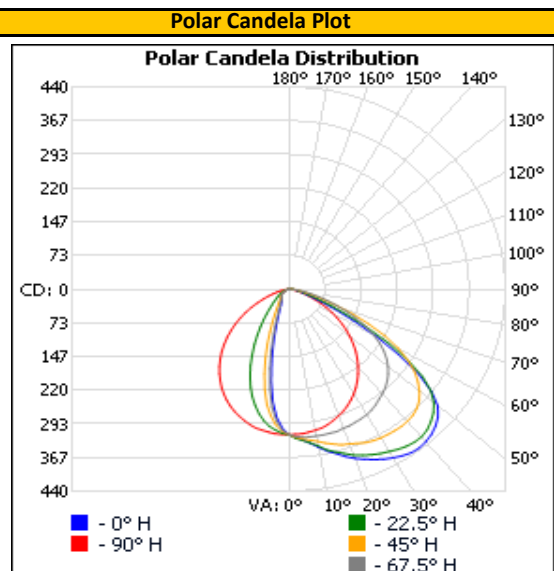
Base Orientation	Input Voltage (Vac)	Input Current (mA)	Input Power (W)	Input Power Factor ()
Up	120.02	132.2	14.31	0.902

Light Output (lm)	Efficacy (lm/W)
752.2	52.6

LUMINOUS INTENSITY SUMMARY (candela)

Vertical Angle (°)	Horizontal				
	0	22.5	45	67.5	90
0	317	317	317	317	317
5	330	331	327	324	316
10	349	347	336	324	312
15	370	367	349	324	305
20	392	384	358	322	294
25	409	398	368	320	281
30	424	408	374	316	263
35	434	417	376	308	243
40	433	419	375	296	219
45	421	408	368	283	193
50	395	385	347	263	164
55	321	332	312	236	133
60	204	232	256	199	101
65	105	129	179	153	71
70	52	64	103	104	44
75	29	34	53	62	25
80	18	20	28	33	12
85	11	12	15	15	4
90	7	7	7	5	0
95	3	3	2	0	0
100	1	0	0	0	0
105	0	0	0	0	0
110	0	0	0	0	0
115	0	0	0	0	0
120	0	0	0	0	0
125	0	0	0	0	0
130	0	0	0	0	0
135	0	0	0	0	0
140	0	0	0	0	0
145	0	0	0	0	0
150	0	0	0	0	0
155	0	0	0	0	0
160	0	0	0	0	0
165	0	0	0	0	0
170	0	0	0	0	0
175	0	0	0	0	0
180	0	0	0	0	0

Full luminous intensity matrix found in .IES file



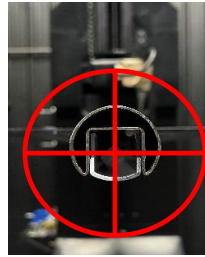
REPORT NO. 105439735CRT-001

ORIENTATION AND ALIGNMENT OF DUT

Luminous Opening		
Length (ft)	Width (ft)	Height (ft)
0.04	6.00	0.09
0°-180° H	90°-270° H	0°-180° V

Test Distance (ft)
29.2

PHOTOMETRIC CENTER OF DUT

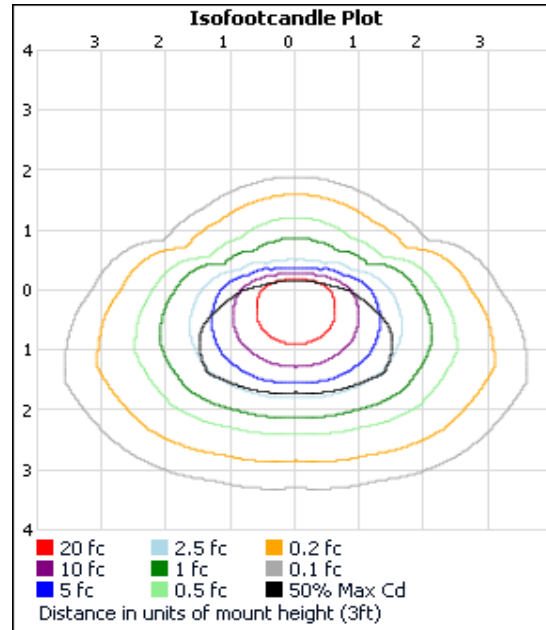
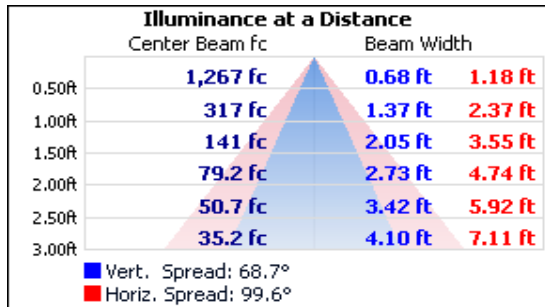


SAMPLE PHOTOS



ILLUMINANCE SUMMARY

ILLUMINANCE - Cone Of Light Isoillumination Plot



Note: 3ft mounting height on .IES file illumination images does not follow far field photometry calculations based on product dimensions.

ZONAL LUMENS

Zonal Lumen Summary

Zone (°)	Lumens	Luminaire
0-30	215.5	28.7%
0-40	351.3	46.7%
0-60	637.6	84.8%
60-90	113.3	15.1%
70-100	36.9	4.9%
90-120	1.3	0.2%
0-90	750.9	99.8%
90-180	1.3	0.2%
0-180	752.2	100.0%

Zone (°)	Lumens	Total	Zone (°)	Lumens	Total
0-10	29.2	3.9%	90-100	1.3	0.2%
10-20	76.7	10.2%	100-110	0.0	0.0%
20-30	109.6	14.6%	110-120	0.0	0.0%
30-40	135.7	18.0%	120-130	0.0	0.0%
40-50	150.4	20.0%	130-140	0.0	0.0%
50-60	135.9	18.1%	140-150	0.0	0.0%
60-70	77.6	10.3%	150-160	0.0	0.0%
70-80	27.9	3.7%	160-170	0.0	0.0%
80-90	7.7	1.0%	170-180	0.0	0.0%