

## TYPE C GONIOPHOTOMETER DISTRIBUTION TESTING

REPORT NO. 105439735CRT-001

Test Configuration	Tested Model No.	Pass/Fail/NA
5	S3-SS-1-N/A-NR-AS-3-3-3L-1-6	NA

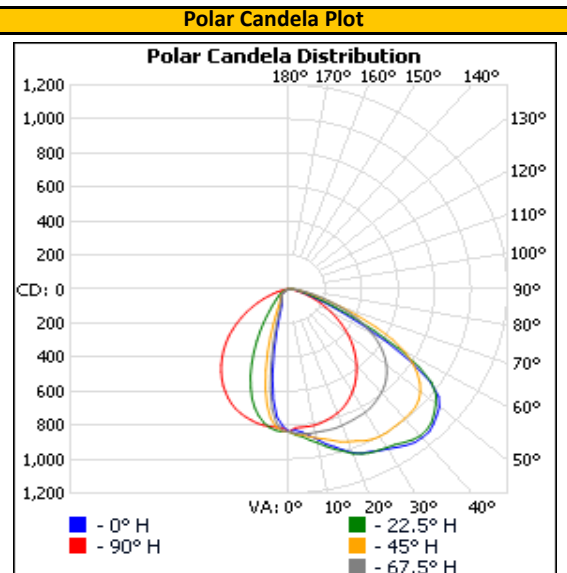
## PHOTOMETRIC AND ELECTRICAL MEASUREMENTS

Base Orientation	Input Voltage (Vac)	Input Current (mA)	Input Power (W)	Input Power Factor ( )
Up	120.07	310.8	31.57	0.980

Light Output (lm)	Efficacy (lm/W)
2035.0	64.5

## LUMINOUS INTENSITY SUMMARY (candela)

Vertical Angle (°)	Horizontal				
	0	22.5	45	67.5	90
0	838	838	838	838	838
5	844	872	862	853	815
10	896	917	889	855	812
15	959	974	920	856	797
20	1023	1030	954	852	776
25	1054	1062	984	845	744
30	1084	1076	999	838	698
35	1121	1100	995	819	642
40	1140	1125	991	792	578
45	1122	1108	982	754	507
50	1078	1053	943	700	431
55	946	956	861	626	349
60	623	694	735	532	268
65	326	387	530	419	189
70	164	196	304	294	121
75	93	107	159	180	69
80	57	63	84	96	34
85	36	38	45	45	12
90	21	22	23	17	1
95	10	10	7	2	2
100	2	1	0	0	2
105	0	0	0	0	2
110	0	0	0	0	1
115	0	0	0	0	1
120	0	0	0	0	1
125	0	0	0	0	0
130	0	0	0	0	0
135	0	0	0	0	0
140	0	0	0	0	0
145	0	0	0	0	0
150	0	0	0	0	0
155	0	0	0	0	0
160	0	0	0	0	0
165	0	0	0	0	0
170	0	0	0	0	0
175	0	0	0	0	0
180	0	0	0	0	0



Full luminous intensity matrix found in .IES file

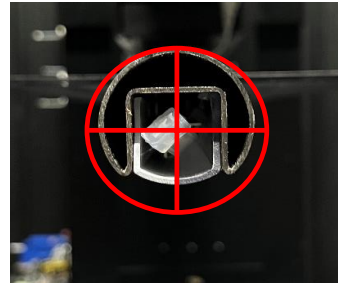
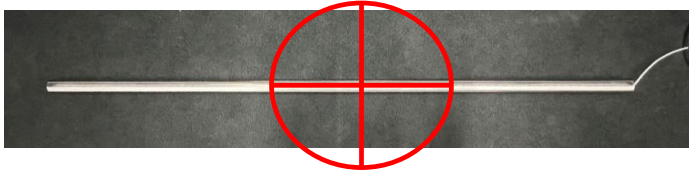
**REPORT NO. 105439735CRT-001**

**ORIENTATION AND ALIGNMENT OF DUT**

Luminous Opening		
Length (ft)	Width (ft)	Height (ft)
0.04	6.00	0.09
0°-180° H	90°-270° H	0°-180° V

Test Distance (ft)
29.2

**PHOTOMETRIC CENTER OF DUT**



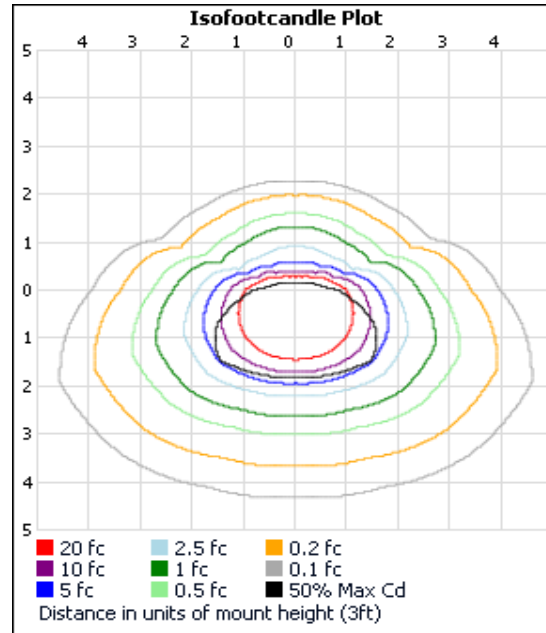
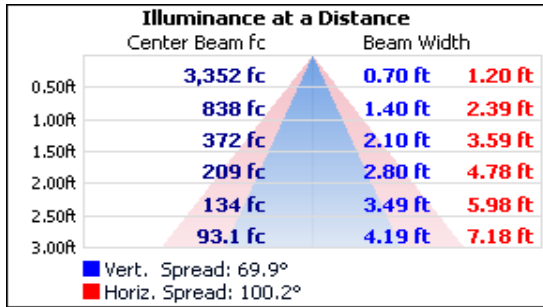
**SAMPLE PHOTOS**



**REPORT NO. 105439735CRT-001**

**ILLUMINANCE SUMMARY**

**Illuminance - Cone Of Light      Isoillumination Plot**



Note: 3ft mounting height on .IES file illumination images does not follow far field photometry calculations based on product dimensions.

**ZONAL LUMENS**

**Zonal Lumen Summary**

Zone (°)	Lumens	Luminaire
0-30	565.4	27.8%
0-40	922.4	45.3%
0-60	1,701.2	83.6%
60-90	329.1	16.2%
70-100	110.2	5.4%
90-120	4.7	0.2%
0-90	2,030.3	99.8%
90-180	4.7	0.2%
0-180	2,035.0	100.0%

Zone (°)	Lumens	Total	Zone (°)	Lumens	Total
0-10	77.6	3.8%	90-100	4.3	0.2%
10-20	200.9	9.9%	100-110	0.3	0.0%
20-30	286.9	14.1%	110-120	0.1	0.0%
30-40	357.0	17.5%	120-130	0.0	0.0%
40-50	401.8	19.7%	130-140	0.0	0.0%
50-60	377.0	18.5%	140-150	0.0	0.0%
60-70	223.2	11.0%	150-160	0.0	0.0%
70-80	82.3	4.0%	160-170	0.0	0.0%
80-90	23.6	1.2%	170-180	0.0	0.0%